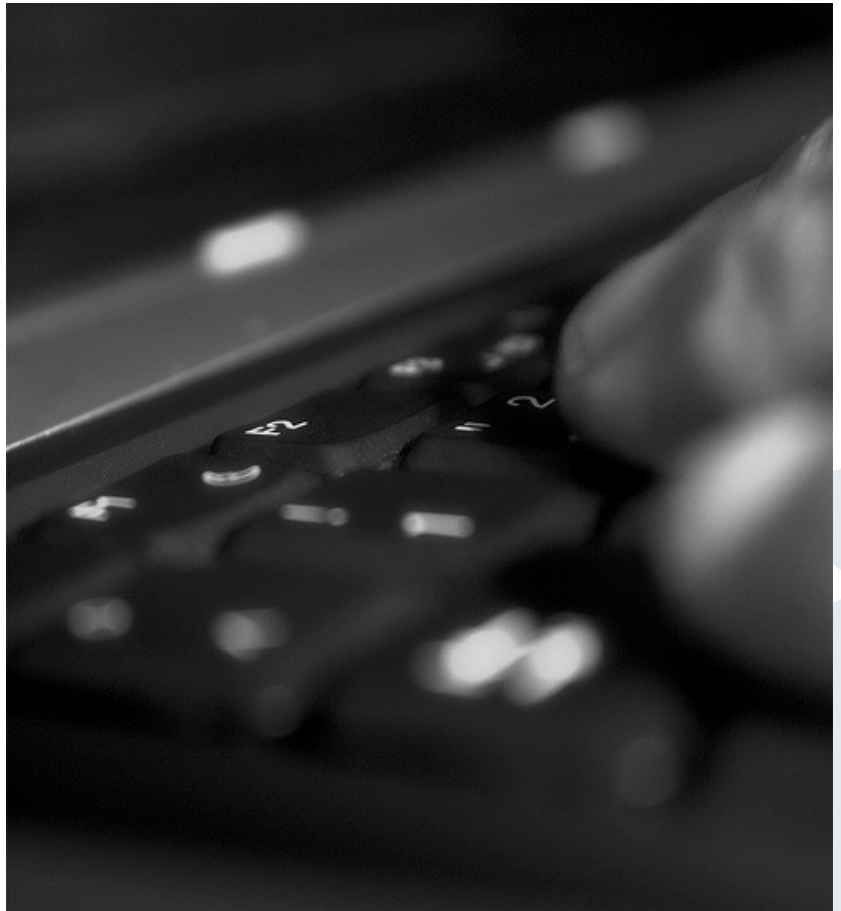


Mentorium 6
Business Informatics 2 (PWIN)

Databases & Data-oriented
Modelling

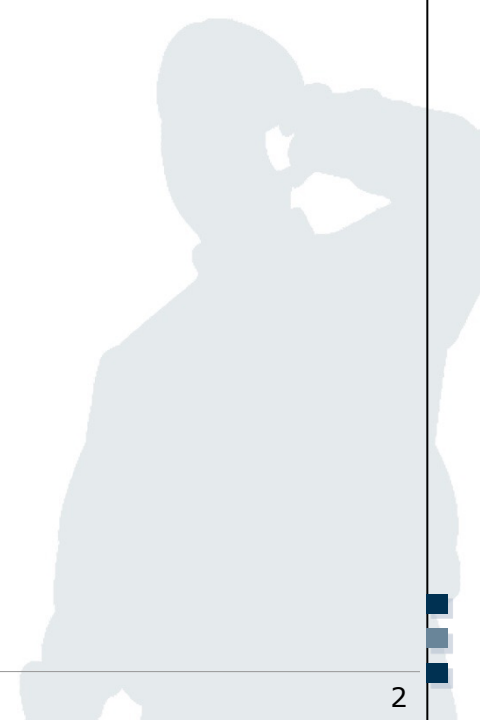
SQL

Frédéric Tronnier, M.Sc.
www.m-chair.de



Jenser (Flickr.com)

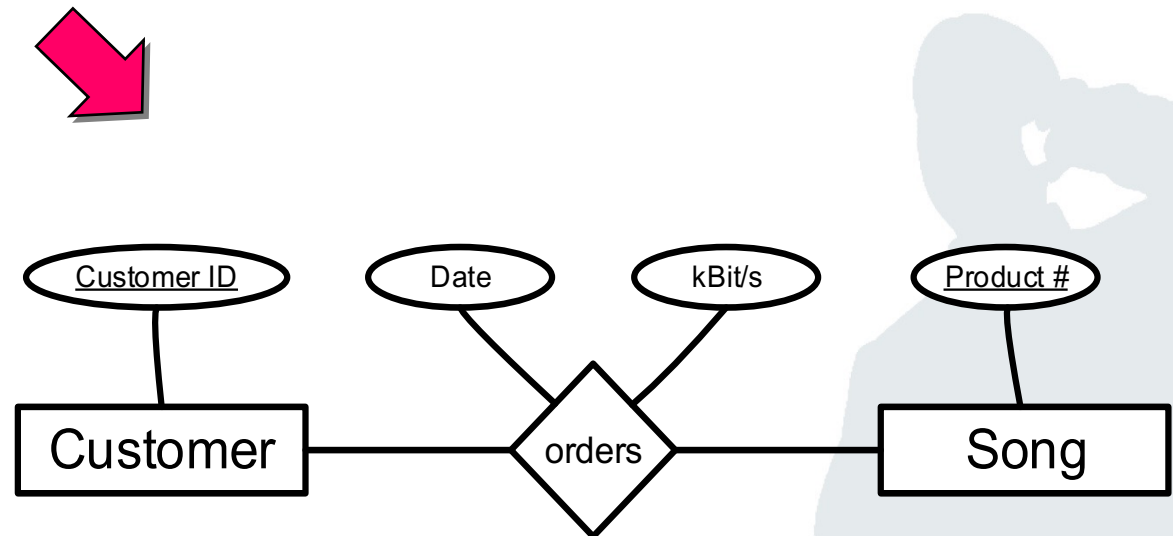
- Entity Relationship Model
- SQL



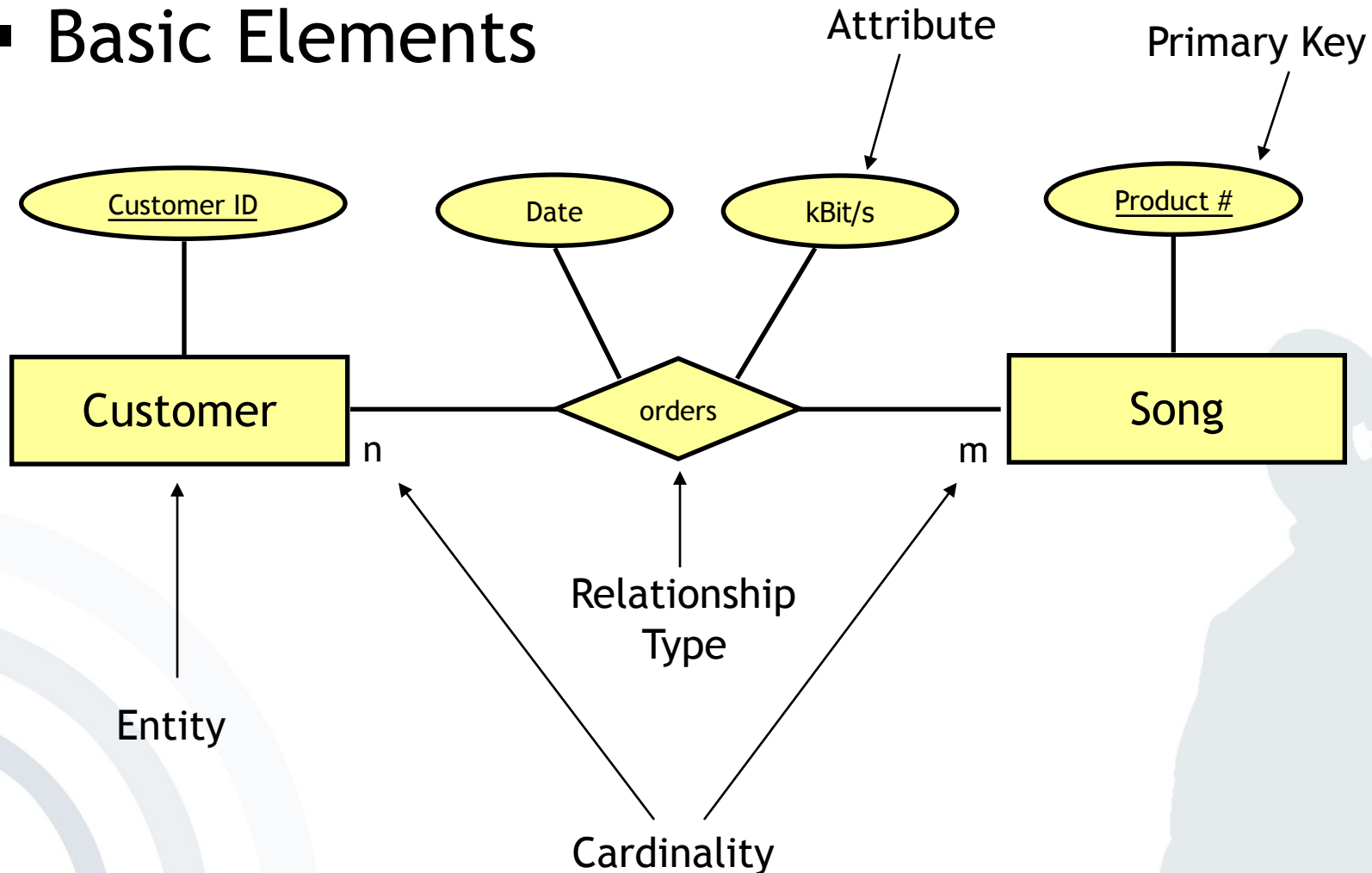
- Modelling of the problem statement from functional perspective
- Abstraction from technical aspects and implementations
- Different modelling concepts (e.g. ERM, SERM, ...) available



Customer orders
a song.



Basic Elements



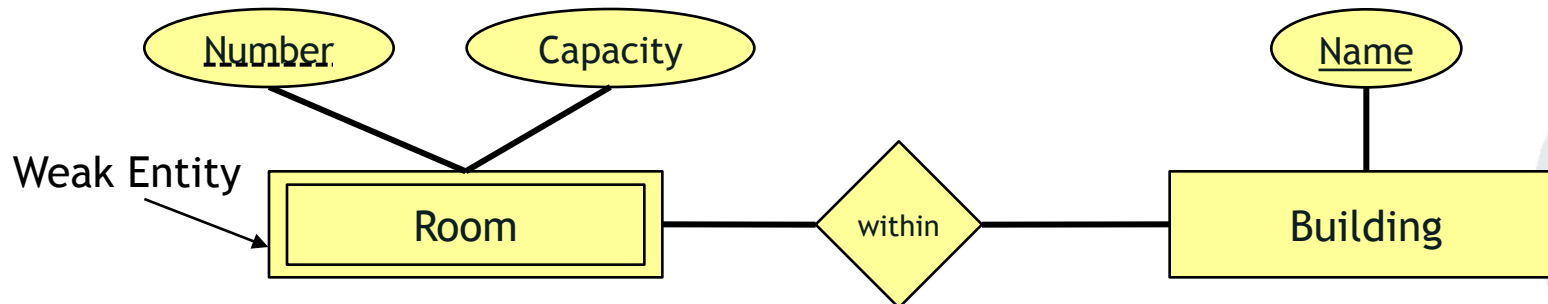
Cardinalities

- Cardinalities describe the number of relationship instances that an entity can participate in:
 - 1:1 (one-to-one), e.g. student - student card (theoretically)
 - 1:n (one-to-many), e.g. university - student (theoretically)
 - n:m (many-to-many), e.g. professor - student (theoretically)

Intervals (min/max notation)

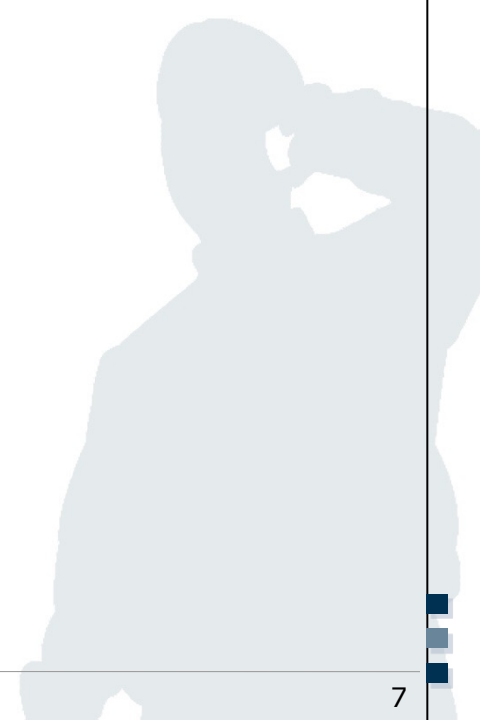
- Intervals allow specifying cardinalities more accurately.
- They specify that each entity participates in at least *min* and at most *max* relationship instances.

Weak entities depend at least on one entity and consequently cannot exist without them.



One cannot uniquely identify a room by its number, but with a combination of room number and name of a building.

Exercise 1: Entity Relationship Model



Exercise 1: ER Model (Part 1)

- Create an ER model which represents the following information. Specify the cardinalities of the relationships using both the n:m notation and the interval notation.
 1. A skill can be needed by many projects but might not be needed by any project. A project can need one or more skills.
 2. An employee can manage many projects. There are some employees who don't manage any projects. A project must be managed by an employee.
 3. An employee may have many skills but might not have any. A skill can be possessed by many employees. There are some skills that no employees possess.

Exercise 1: ER Model (Part 1)

Define Entities

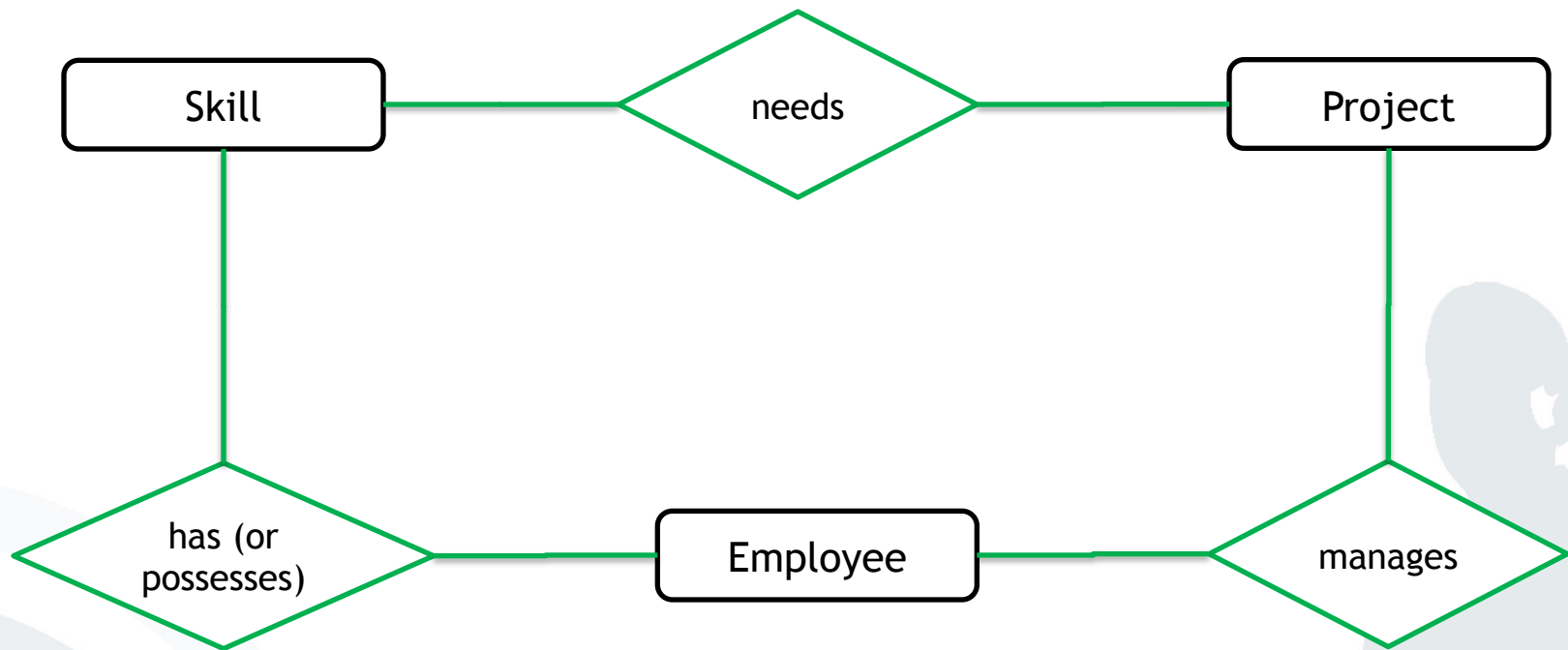
Skill

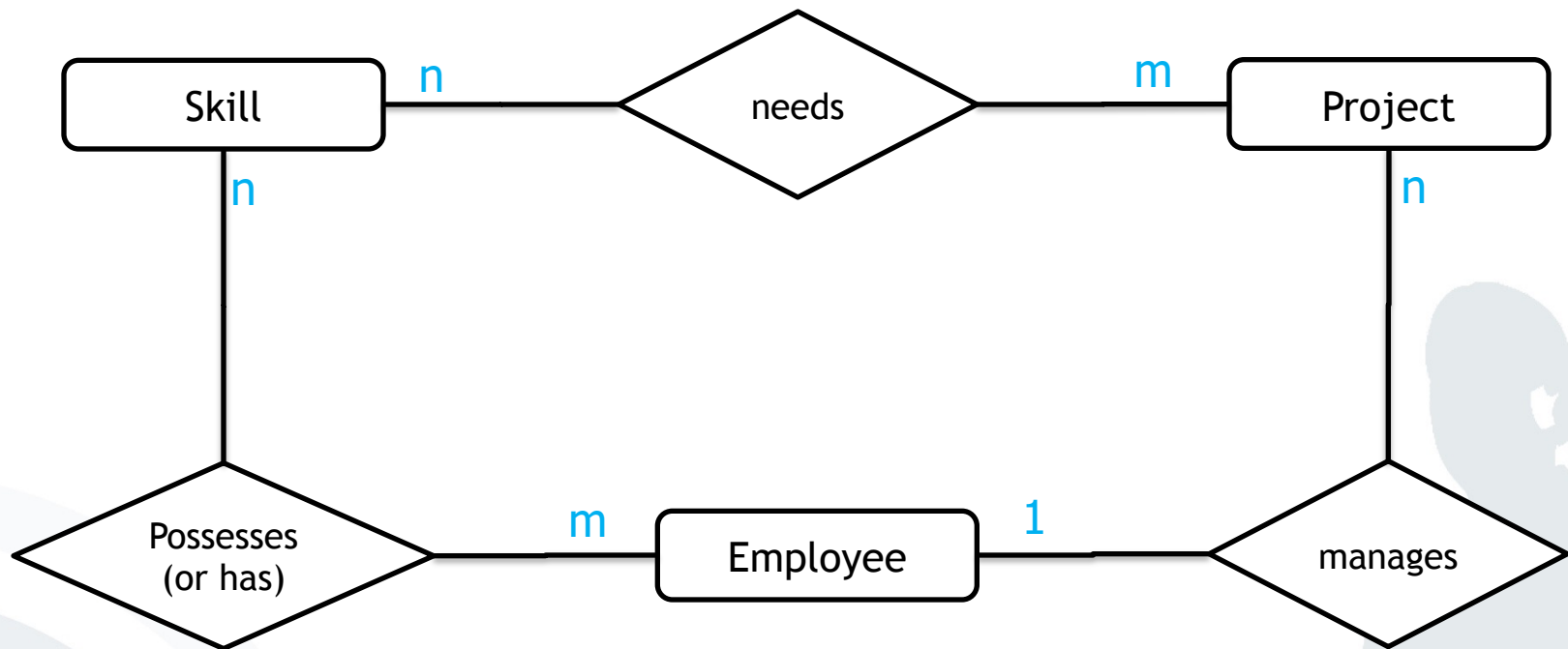
Project

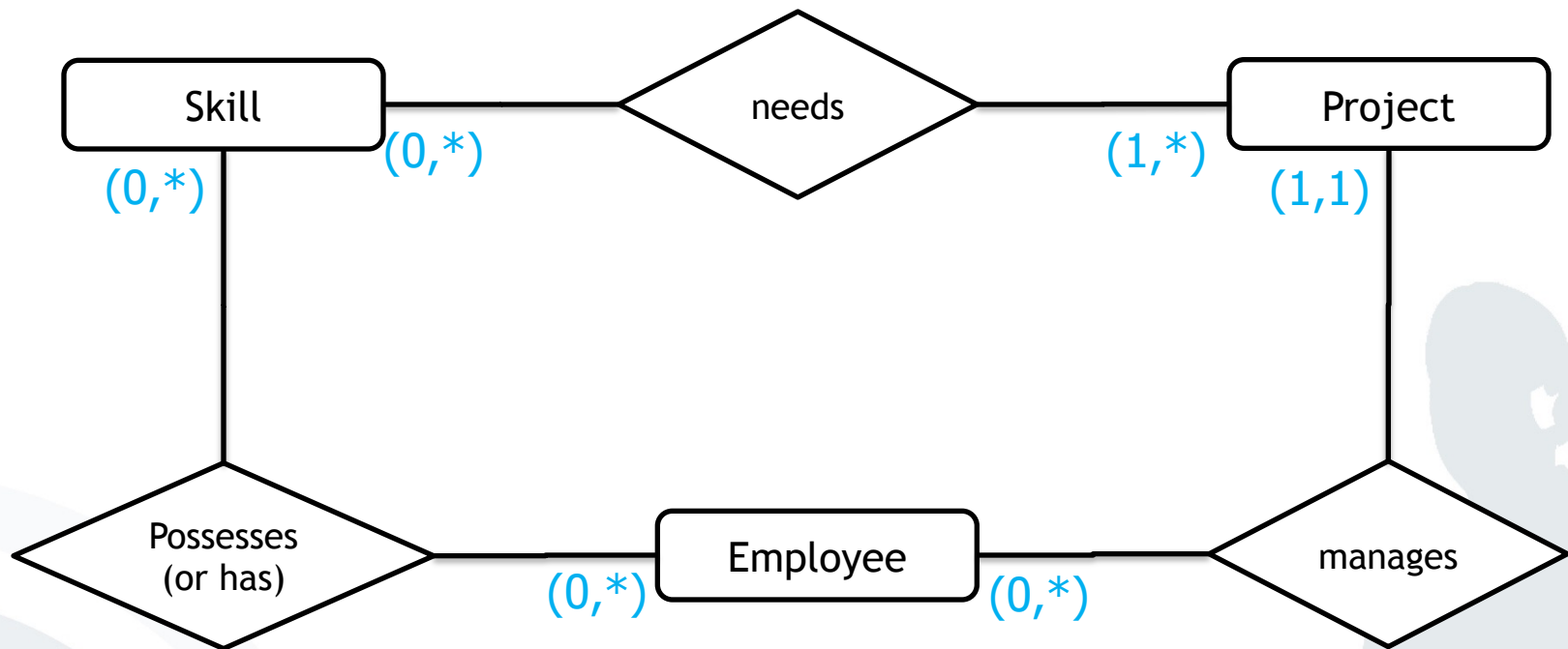
Employee

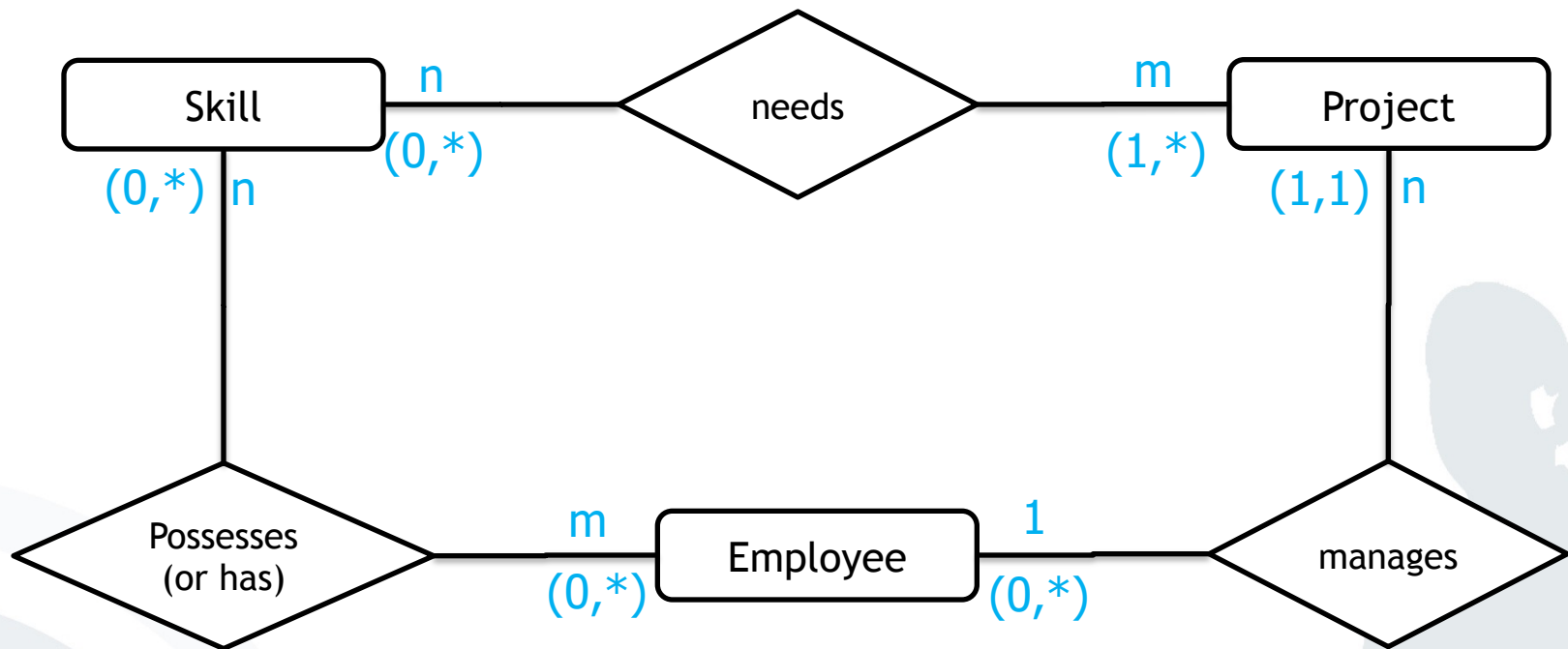
Exercise 1: ER Model (Part1)

Create Relations







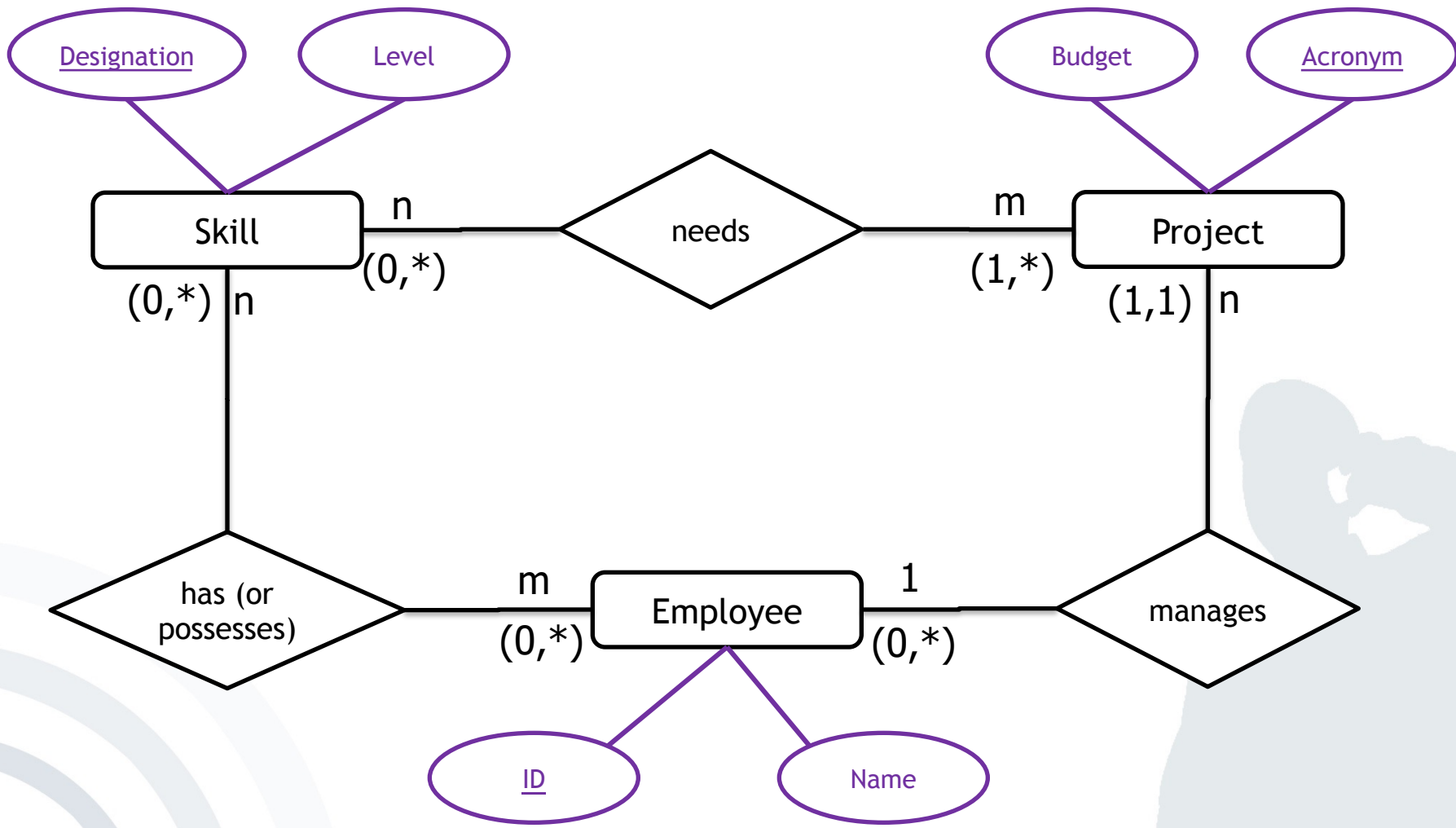


Exercise 1: ER Model (Part 2)

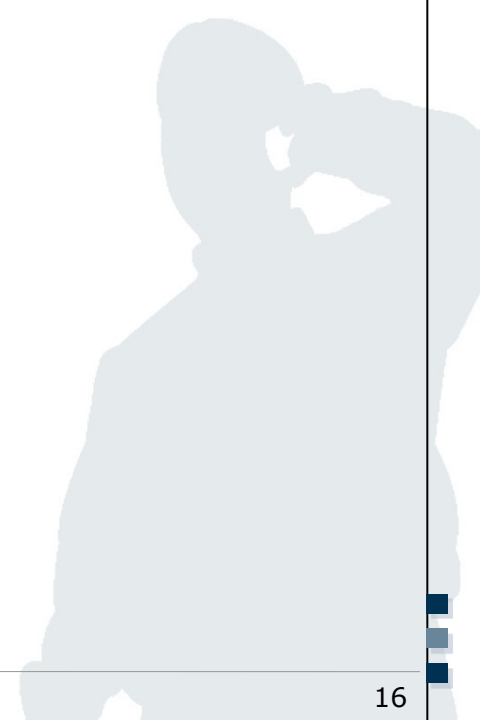
- Add attributes to entities with the help of the following information:
 1. A project has a unique acronym and a budget.
 2. An employee has an ID and a name.
 3. A skill is described by its designation and level.

Exercise 1: ER Model (Part 2)

Add Attributes



Exercise 2: Entity Relationship Model



Create an ER model of the InstaMatch® system.

- Identify and mark the **primary key** for each entity and avoid as far as possible artificial keys (e.g. ID).
- Define the cardinalities, using the **n:m notation**.
- Make explicitly use of **weak entities**.
- Find **adequate attributes**.

Use the following entities for your model:

- **User**
- **Date**
- **User profile**
- **Meeting Point**

Exercise 2: ER Model

1.) Define entities

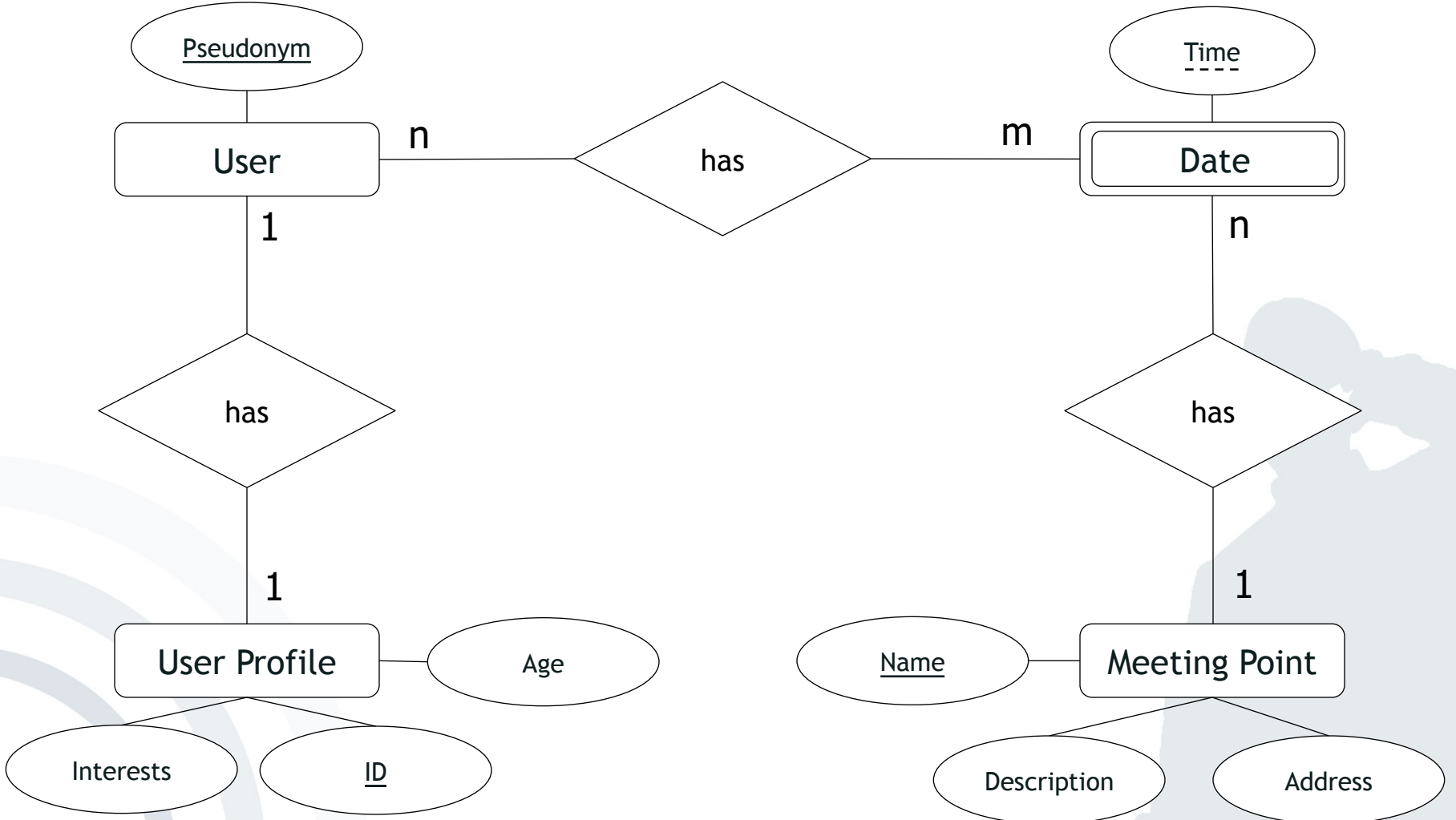
User

Date

User Profile

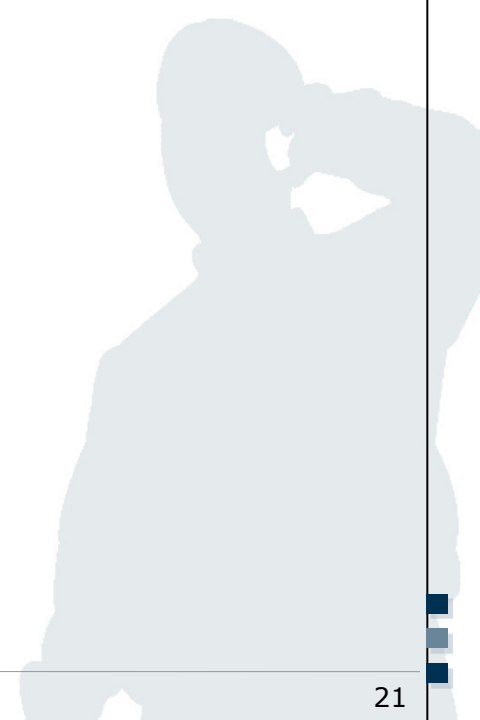
Meeting Point

5.) Define weak entities



- Entity Relationship Model
- SQL

SQL Repetition



- Structure of the basic elements
 - SELECT attribute(s)
 - FROM relation(s)
 - [WHERE condition(s)]
 - [GROUP BY attribute(s)]
 - [ORDER BY attribute(s)]
- Date Format, Strings and Numbers
 - Date Format: 'YYYY-MM-DD', e.g. '1974-12-31'
 - Strings: 'String', e.g. 'I like SQL'
 - Numbers: Number, e.g. 41 or 34.12

Note: (1) Dates and Strings have to be enclosed by two apostrophes.
(2) The conditions in [...] are optional.

SELECT * ← *All columns*
FROM Products ← *table 'Products'*
ORDER BY ID ← *order result by column 'ID'*

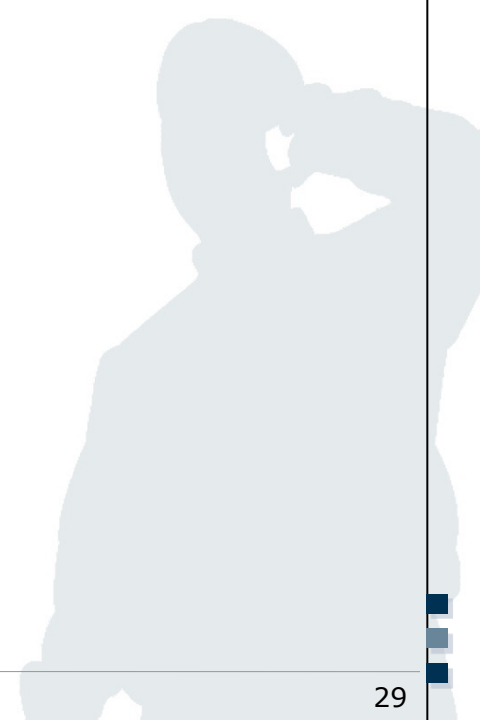
ID	Product_name	Colour	Article_no	Sale_price	Purchase_price	Stock	Items_sold	City
1	Monitor 17'	White	1297812542	399.00	249.99	50	134	Frankfurt
2	Monitor 19'	black	2457897145	499.00	379.00	12	289	Berlin
3	Monitor 17'	black	1297467815	405.00	249.99	25	124	Frankfurt
4	Monitor 19'	white	2459871327	509.00	389.99	150	12	Frankfurt
5	Monitor 20'	black	2789441512	799.00	599.00	520	1052	Berlin
6	Monitor 20'	white	2799151424	829.00	549.99	100	26	Berlin
7	Monitor 20'	anthracite	2764657527	819.00	589.99	50	127	Nürnberg
8	Monitor 21'	anthracite	2845161215	999.00	799.99	100	279	Hamburg
9	Monitor 24'	white	2945712415	1299.00	945.00	25	124	Berlin
10	Monitor 24'	black	2955745742	1350.00	956.00	450	1024	Hamburg
...								

SELECT using WHERE

SELECT *
FROM Products
WHERE Purchase_price > 500 AND City = 'Berlin'

ID	Product_name	Colour	Article_no	Sale_price	Purchase_price	Stock	Sold_items	City
5	Monitor 20'	black	2789441512	799.00	599.00	520	1052	Berlin
6	Monitor 20'	white	2799151424	829.00	549.99	100	26	Berlin
9	Monitor 24'	white	2945712415	1299.00	945.00	25	124	Berlin

Exercise 3: SQL



Exercise 3: SQL

- Please use the databases and environment provided by [w3schools.com](https://www.w3schools.com) called [Tryit Editor](#)
- W3schools also provides several exercises and examples. Use them!

SQL Statement:

```
SELECT * FROM Customers;
```

Edit the SQL Statement, and click "Run SQL" to see the result.

Run SQL »

Result:

Number of Records: 91

CustomerID	CustomerName	ContactName	Address	City	PostalCode	Country
1	Alfreds Futterkiste	Maria Anders	Obere Str. 57	Berlin	12209	Germany
2	Ana Trujillo Emparedados y helados	Ana Trujillo	Avda. de la Constitución 2222	México D.F.	05021	Mexico
3	Antonio Moreno Taquería	Antonio Moreno	Mataderos 2312	México D.F.	05023	Mexico
4	Around the Horn	Thomas Hardy	120 Hanover Sq.	London	WA1 1DP	UK
5	Berglunds snabbköp	Christina Berglund	Berguvsvägen 8	Luleå	S-958 22	Sweden
6	Blauer See Delikatessen	Hanna Moos	Forsterstr. 57	Mannheim	68306	Germany
7	Blondel père et fils	Frédérique	24, place Kléber	Strasbourg	67000	France

Your Database:

Tablenames	Records
Customers	91
Categories	8
Employees	10
OrderDetails	518
Orders	196
Products	77
Shippers	3
Suppliers	29

Link: https://www.w3schools.com/sql/trysql.asp?filename=trysql_op_in

a) How many customers are stored in the table 'Customers'?

```
SELECT COUNT (CustomerID)  
FROM Customers
```

COUNT(CustomerID)
91

How many distinct cities are in the table „Customers“?

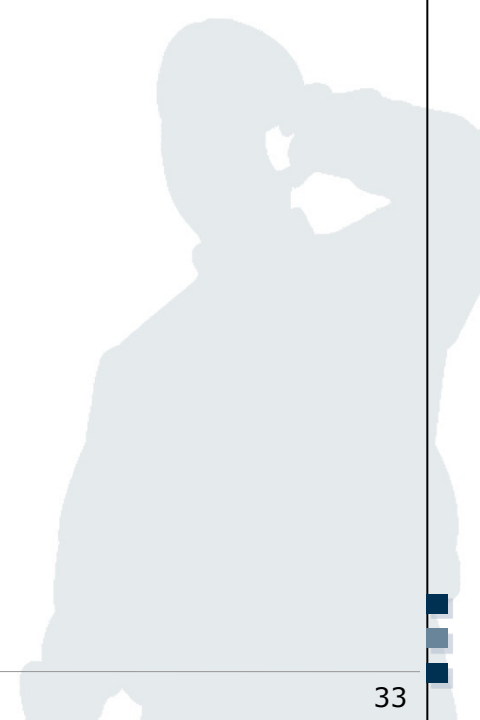
```
SELECT COUNT (DISTINCT City) AS individualCitys  
FROM Customers
```

individualCity
69

b) What is the average price over all Products?

```
SELECT      AVG (Price)
FROM        Products
```

AVG(Price)
28.866



c) Display the Name and Price of the Products from most expensive to least expensive.

```
SELECT ProductName, Price
FROM Products
ORDER BY Price DESC
```

Or more complicated:

```
SELECT MAX(Price), ProductName
FROM Products
GROUP BY ProductName
ORDER BY MAX(Price)DESC
```

Price	ProductName
263.5	Côte de Blaye
123.79	Thüringer Rostbratwurst
97	Mishi Kobe Niku
81	Sir Rodney's Marmalade
62.5	Carnarvon Tigers
55	Raclette Courdavault
53	Manjimup Dried Apples
49.3	Tarte au sucre

d) How many orders were made per day?

```
SELECT OrderDate, COUNT(OrderDate)
FROM Orders
GROUP BY OrderDate
```

OrderDate	Orders
7/4/1996	1
7/5/1996	1
7/8/1996	2
7/9/1996	1
7/10/1996	1
7/11/1996	1
7/12/1996	1
7/15/1996	1
7/16/1996

e) How many Customers are from Paris?

```
SELECT COUNT(City)
FROM Customers
WHERE City = "Paris"
```

Count
2

```
SELECT COUNT(City), City
FROM Customers
WHERE City = "Paris"
GROUP BY City
```

Count	City
2	Paris

f) Display the names of all Customers from Germany

```
SELECT CustomerName, Country  
FROM Customers  
WHERE Country = "Germany"
```

CustomerName	Country
Alfreds Futterkiste	Germany
Blauer See Delikatessen	Germany
Drachenblut Delikatessend	Germany
Frankenversand	Germany
Königlich Essen	Germany
Lehmanns Marktstand	Germany
Morgenstern Gesundkost	Germany
Ottilies Käseladen	Germany
....	

g) Display the Name and Address of all customers, sorted descending

```
SELECT CustomerName, Address  
FROM Customers  
ORDER BY CustomerName DESC
```

CustomerName	Address
Wolski	ul. Filtrowa 68
Wilman Kala	Keskuskatu 45
White Clover Markets	305 - 14th Ave. S. Suite 3B
Wellington Importadora	Rua do Mercado, 12
Wartian Herkku	Torikatu 38
Vins et alcools Chevalier	59 rue de l'Abbaye
Victuailles en stock	2, rue du Commerce

h) How many Customers are from Berlin?

```
SELECT COUNT(City)
FROM Customers
WHERE City = "Berlin"
```

Count
1

i) How many Customers are not from Berlin?

```
SELECT COUNT(City)
FROM Customers
WHERE City <> "Berlin"
```

Or:

```
SELECT COUNT(City)
FROM Customers
WHERE NOT City = "Berlin"
```

Count
90

j) How many Products cost more than 40 and have a CategoryID of less than 3?

```
SELECT COUNT(Price)
FROM Products
WHERE Price > 40 AND CategoryID < 3
```

NumberProducts
3

k) How many OrderDetailIDs had a Quantity of more than 5, but less than 10

```
SELECT COUNT(OrderDetailID) AS MediumSizeOrders  
FROM OrderDetails  
WHERE Quantity > 5 AND Quantity < 10
```

MediumSizeOrders
46

l) Display 'CategoryName', 'ProductName' and the Price of all Products

```
SELECT Categories.CategoryName, Products.ProductName,
       Products.Price
FROM Products INNER JOIN Categories ON
       Products.CategoryID =
       Categories.CategoryID
```

CategoryName	ProductName	Price
Beverages	Chartreuse verte	18
Beverages	Chang	19
Beverages	Guaraná Fantástica	4.5
Beverages	Sasquatch Ale	14
Beverages	Steeleye Stout	18
Beverages	Chais	18
Beverages	Côte de Blaye	263.5
.....		

m) Display all CustomerNames and OrderDates that have been made from Mexico

```
SELECT Orders.OrderDate, Customers.CustomerName,
       Customers.Country
FROM Orders INNER JOIN Customers ON Customers.CustomerID =
       Orders.CustomerID
WHERE Country = "Mexico"
```

OrderDate	CustomerName	Country
9/18/1996	Ana Trujillo Emparedados y helados	Mexico
11/27/1996	Antonio Moreno Taquería	Mexico
7/18/1996	Centro comercial Moctezuma	Mexico
11/14/1996	Pericles Comidas clásicas	Mexico
10/4/1996	Pericles Comidas clásicas	Mexico
9/12/1996	Tortuga Restaurante	Mexico
...		

n) Insert a data record into the table “Orders” from the customer with the new CustomerID = 1 and display it.

```
INSERT INTO Orders(OrderID, CustomerID, EmployeeID, OrderDate,  
ShipperID)  
VALUES (12345, 1, 23243, 2020-01-01, 213442)
```

```
(or, with "OrderID" as Auto ID)  
INSERT INTO Orders  
VALUES (1, 23243, 2020-01-01, 213442)
```

```
SELECT *  
FROM Orders  
WHERE CustomerID = 1
```

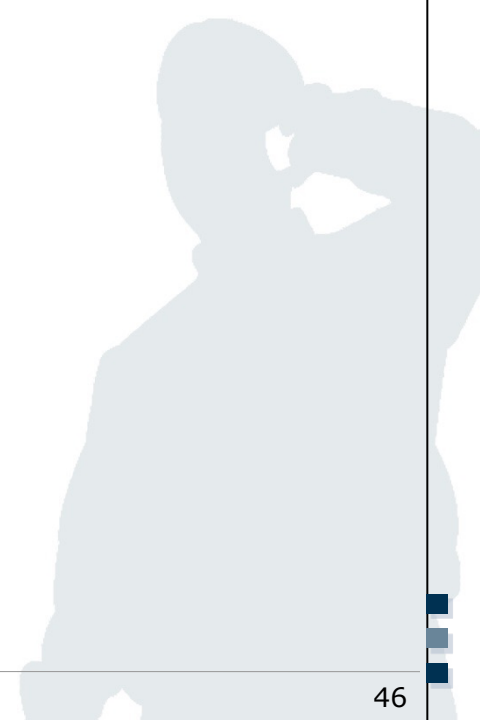

o) Update the City of the customer with the CustomerID '1' to Frankfurt.

```
UPDATE Customers
SET City = "Frankfurt"
WHERE CustomerID = 1
```

CustomerID	CustomerName	ContactName	Address	City	PostalCode	Country
1	Alfreds Futterkiste	Maria Anders	Obere Str. 57	Frankfurt	12209	Germany

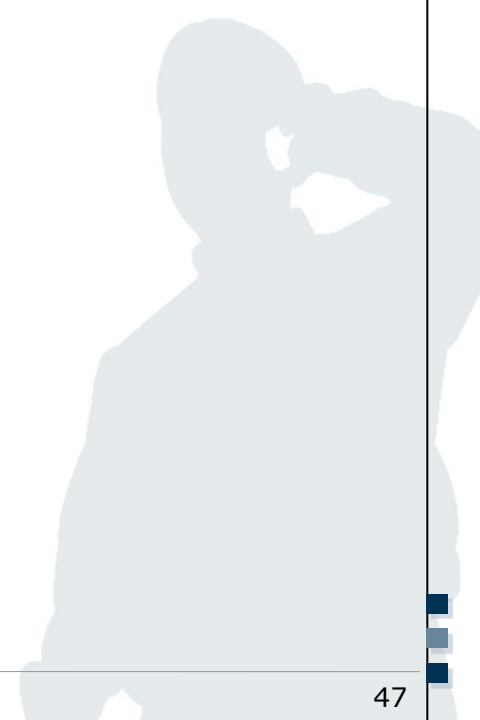
p) Delete the entry inserted in Exercise n).

```
DELETE FROM Orders  
WHERE OrderID = 10256
```



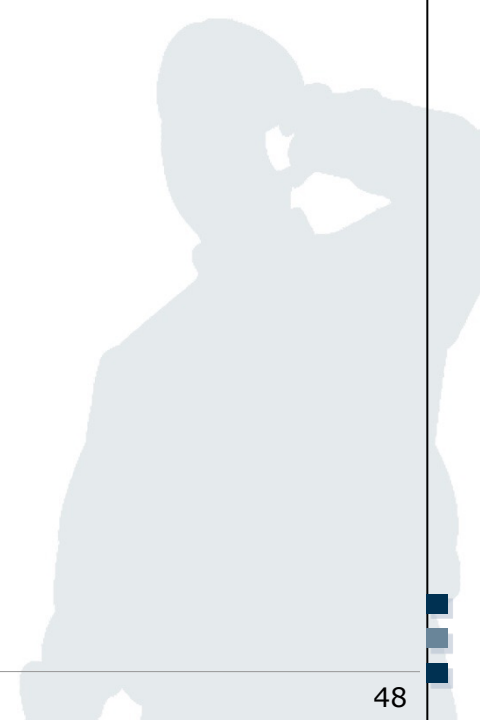
q) Delete the whole table “Orders”.

```
DROP TABLE Orders
```



r) Delete the whole database.

```
DROP DATABASE name_of_Database
```



- Combine two INNER JOINS to form a large dataset

```
SELECT *
FROM (Customers INNER JOIN Orders ON
Customers.CustomerID = Orders.CustomerID) AS
CustomerNew INNER JOIN OrderDetails ON
CustomerNew.OrderID = OrderDetails.OrderID
```



Number of Records: 518

CustomerID	CustomerName	ContactName	Address	City	PostalCode	Country	OrderID	CustomerID
90	Wilman Kala	Matti Karttunen	Keskuskatu 45	Helsinki	21240	Finland	10248	90
90	Wilman Kala	Matti Karttunen	Keskuskatu 45	Helsinki	21240	Finland	10248	90

Open Questions?

